



e-ISSN: 2319-8753 | p-ISSN: 2347-6710

IJRSET

International Journal of Innovative Research in
SCIENCE | ENGINEERING | TECHNOLOGY

INTERNATIONAL JOURNAL OF INNOVATIVE RESEARCH

IN SCIENCE | ENGINEERING | TECHNOLOGY

Volume 13, Special Issue 1, April 2024

ISSN INTERNATIONAL
STANDARD
SERIAL
NUMBER
INDIA

Impact Factor: 8.423

9940 572 462

6381 907 438

ijirset@gmail.com

www.ijirset.com

A Fine-Tuned Model for Classification and Prediction of Lung Disease Using X-ray Images and Machine learning

Mr. M. Venkaesan¹, M. C. Karthick Raaja², K. Saran Babu³, A. Suhail⁴, B. Suresh Kumar⁵,

U.G Scholars, Department of Electronics and Communication Engineering, Adhiyamaan College of Engineering,

Krishnagiri, Tamil Nadu, India. ^{2,3,4,5}

Associate Professor, Department of Electronics and Communication Engineering, Adhiyamaan College of Engineering,

Krishnagiri, Tamil Nadu, India. ¹

ABSTRACT: Lung cancer (LC) is one among the foremost serious cancers of human health. Histopathology reports on surgical cancer specimens have gotten a lot of and a lot of advanced. For this drawback of incomplete experimental subjects within the computer -aided diagnosing of carcinoma subtypes, technique} enclosed comparatively rare respiratory organ adenosquamous cancer (ASC) samples for the primary time and projected a computer-aided diagnosing method supported histopathological pictures of ASC, respiratory organ epithelial cell cancer (LUSC) and tiny cell respiratory organ cancer (SCLC). The support vector machines (SVM) classifier was accustomed classify LC subtypes, and also the receiver operational graphical record and space beneath the curve, were accustomed build it a lot of intuitive judge the generalization ability of the classifier. Finally, through a horizontal comparison with a spread of thought classification models, experiments show that the classification impact achieved by the SVM model is that the best.

KEYWORD: - Lung cancer, classification, pathology, immunohistochemistry, molecular testing.

I.INTRODUCTION

Lung disease is categorized as the third leading cause of mortality globally, with an estimated total of five million deaths per year. As a vital respiratory organ, the lung is not only prone to infection from components but externally as well. Lung disease manifests due to various forms of air pollution, microbiological attack, chemical intake, or physical sickness. One of the most alarming lung diseases in recent times is COVID-19. COVID-19 is detected by identifying upper respiratory tract and lung infection accompanied by pneumonia and a cold-like syndrome. The disease was first explored in Wuhan, China. COVID-19 causes the air sacs in the lungs to fill with fluids leaking from the blood vessels, resulting in difficulty in breathing.

Visual analysis by nurses of histopathological LC pictures is one amongst the foremost necessary ways in which to diagnose LC subtypes. However, it's sophisticated and difficult for pathologists to review thousands of histopathological pictures, and it's terribly tough for physicians with very little expertise. Therefore, to alleviate the pressure on doctors and improve the accuracy and potency of identification, it's notably necessary to review the computer-aided identification model of LC.

Medical X-ray imaging is a universal diagnosis technology for disease diagnosis. Using X-ray, the internal physical structure of organs and bones can be detected. X-rays are valuable diagnosis techniques that have been utilized for years by experts to diagnose fractures, cancers, pneumonia, dental issues, and other conditions. In severe circumstances, Computed Tomography (CT) may provide a succession of body scans that are then combined to create a three-dimensional X-ray picture analyzed by a computer.

II. RELATED WORKS

Jin, Zhang, Y., & Jin. pulmonic Nodules Detections supported CT Image exploitation Convolutional Neural Networks, ninth International conference on procedure Intelligence and style, Jin, X., Zhang, Y., & Jin, Q., to seek out the carcinoma projected model employed by Convolutional Neural Networks (CNN) as a way of differentiation within the laptop power-assisted Diagnostic (CAD) system. And this model has achieved Associate in Nursing achieved an accuracy of eighty-four.6%, sensitivity of eighty-two.5% and specificity of eighty- six.7%. nonetheless accuracy isn't enough; the advantage of the projected system is that it uses a circular filter within the targeted regions whereas extracting that helps to scale back the overall price of the acquisition and coaching section.

III. EXISTING METHOD

LC imaging imaging methods mainly include: X-ray photography, which is one of the most basic methods of lung testing, but image imaging is low and there are invisible areas on the test. Computed tomography (CT), in particular, chest CT has benefits in locating the first peripheral LC and identifying the location of the lesion. Currently, it is one of the most widely used diagnostic methods for diagnosis and stage LC. However, one of the limitations of using CT scans is that in patients who are routinely tested, it is necessary to consider the effect of radiation exposure produced by this activity.

IV. PROPOSED SYSTEM

The proposed program includes ASC (lung adenosquamous carcinoma) sample data for the first time and introduces a computer-assisted model for the automatic detection of LC subtypes based on histopathological images of LC (lung cancer). First, texture analysis methods are used to extract the-size features of histopathological LC images, and the relevant features (Relief) algorithm are used to select the feature. Compared to a variety of machine learning (ML) models, the SVM model achieves better LC subtype segmentation. The main contributions of this program are the first to incorporate rare ASCs into images of lung organs and to use them in the automatic classification of LC subtypes. This program was the first to use the SVM algorithm in the classification of LC histopathological images, indicating the great potential of ML algorithms to be used in evaluating LC subtypes.

V. METHODOLOGY

The input image is histopathological image of lung cancer subtype is given the software, first image will be preprocessed for separating structure and remove the noise using gaussian filtering. The adaptive histogram equalization is used for improve on this by transforming each pixel with a transformation function derived from a neighborhood region. In its simplest form, each pixel is transformed based on the histogram of a square surrounding the pixel, Histogram Equalization. Histogram equalization is a technique for adjusting image intensities to enhance contrast. Feature extraction is a process of dimensionality reduction by which an initial set of raw data is reduced to more manageable groups for processing.

VI. BLOCK DIAGRAM

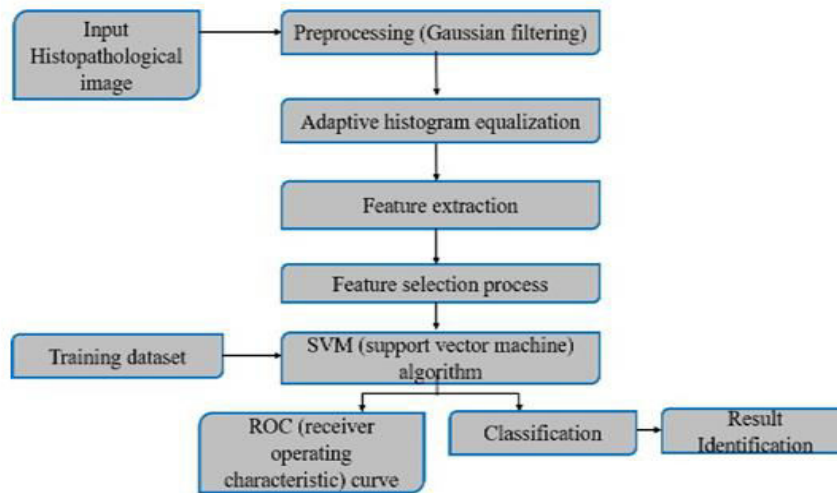


Fig: No:1 Block Diagram

VII. SUPPORT VECTOR MACHINE ALGORITHM

Support Vector Machine or SVM is one among the foremost widespread supervised Learning algorithms, that is employed for Classification further as Regression issues. However, primarily, it's used for Classification issues in Machine Learning. The goal of the SVM formula is to make the most effective line or call boundary that may segregate n- dimensional area into categories in order that we are able to simply place the new datum within the correct class within the future. This best call boundary is termed a hyperplane. SVM chooses the intense points/vectors that facilitate in making the hyperplane. These extreme cases are referred to as support vectors, and thence formula is termed as Support Vector Machine.

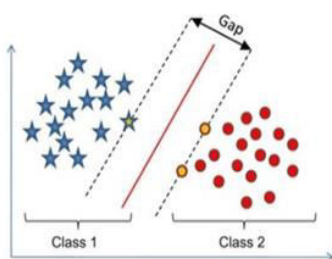


Fig: No:2.1 Support Vector machine Algorithm

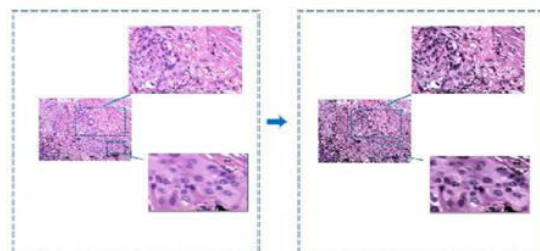


Fig: No:2.2 The Classification Of LC Histopathological Images Using SVM Algorithm

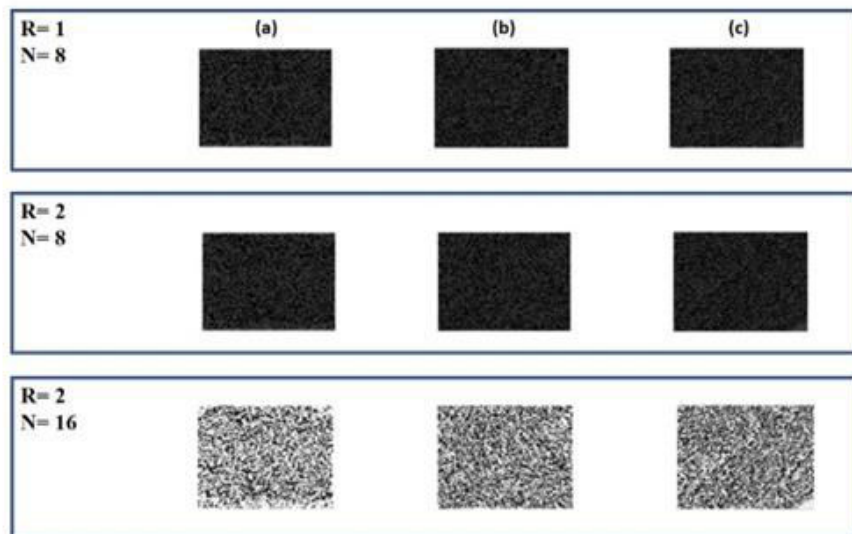


Fig: No:2.3 Gray Coded Restored Image

The Gray values distribution of the R D a pair of and N D sixteen schemes was comparatively uniform. However, the experiments showed that the extracted 59-dimensional options were a lot of useful in characteristic histopathological pictures of LC once R D a pair of and N D eight, whereas the extracted options had a lot of redundant data once R D a pair of and N D sixteen, that wasn't causative to the development of the next classification effect

VIII. RESULT AND DICUSSION

Thus, this detection of lung cancer subtype classification using image processing techniques is implemented successfully. The expected output result image is shown below.

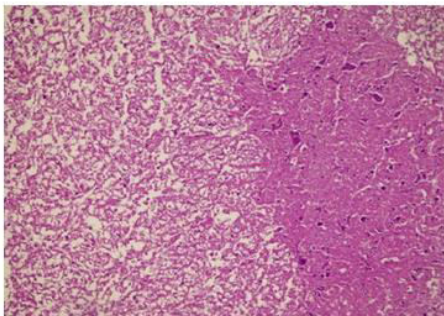


Fig: No: 3.1 Original image

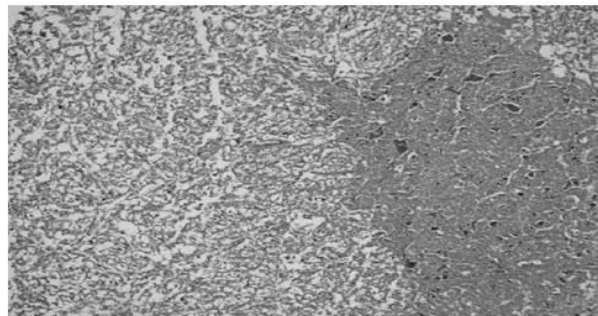


Fig: No: 3.2 Gray level image

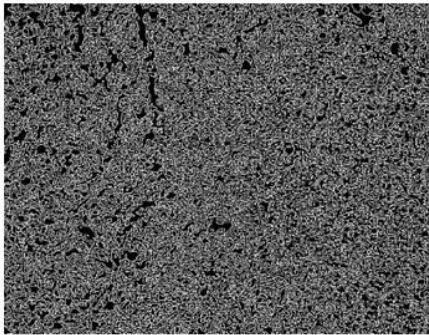


Fig: No :3.3 Canny image

```
total classes images 12
['img0', 'img1', 'img10', 'img2', 'img3', 'img4', 'img5', 'img6', 'img7', 'img8', 'img9', 'Thumbs']
12
4
image loading.....
pre-process start....
segment start....
predicted output
svm processing....
squamous cell carcinoma ratio P=0.062 for univariate analysi
lung infected cancer
```

Fig: No: 3.4 Carcinoma ratio

VIII. CONCLUSION

This project would incorporate the SVM algorithm into the classification of histopathological LC images. We have included histopathological images of LUSC, ASC and SCLC. Experimental results show that SVM has excellent differentiation of the subtypes of lung cancer subtypes, providing a good guideline for the separation of lung images. It also provides an accurate guide to the division of medical images into complex tissue.

REFERENCES

- [1]W. Cao, R. Wu, G. Cao, and Z. He, "A comprehensive review of computer-aided designation of pneumonic nodules supported X-radiation scans," *IEEE Access*, vol. 8, pp. 154007–154023, 2020.
- [2]N. Nasrullah, J. Sang, M. S. Alam, M. Mateen, B. Cai, and H. Hu, "Automated respiratory organ nodule detection and classification victimization deep learning combined with multiple methods," *Sensors*, vol. 19, no. 17, p. 3722, Aug. 2019.
- [4]Zhao, S. Qi, B. Zhang, H. Ma, W. Qian, Y. Yao, and J. Sun, "Deep CNN models for pneumonic nodule classification: Model modification, model integration, and transfer learning," *J. X-Ray Sci. Technol.*, vol. 27, no. 4, pp. 615–629, Sep. 2019.
- [5]M. Kriegsmann, C. Haag, C. A. Weis, G. Steinbuss, and K. Kriegsmann, "Deep learning for the classification of small- cell and non-small-cell carcinoma," *Cancers*, vol. 12, no. 6, p. 1604, 2020.
- [6]P. Ocampo, A. Moreira, N. Coudray, T. Sakellaropoulos, N. Narula, M. Snuderl, D. Fenyo, N. Razavian, and A. Tsirigos, "Classification and mutation prediction from non-small cell carcinoma histopathology pictures victimization deep learning," *J. pectoral Oncol.*, vol. 13, no. 10, p. S562, Oct. 2018.
- [7]Liu, C. Wang, J. Bai, and G. Liao, "Fine-tuning pre-trained convolutional neural networks for viscus malignant tumor sickness classification on magnification narrow-band imaging pictures," *Neurocomputing*, vol. 392, pp. 253–267, Jun. 2020.
- [8]F. Kanavati, G. Toyokawa, S. Momosaki, M. Rambeau, Y. Kozuma, F. Shoji, K. Yamazaki, S. Takeo, O. Iizuka, and
- [9]Z. Tsuneki, "Weakly supervised learning for lung carcinoma classification using deep learning," *Sci. Rep.*, vol. 10, no. 1pp. 1–11, Jun. 2020.
- [10]Y. Han, Y. Ma, Z. Wu, F. Zhang, D. Zheng, X. Liu, L. Tao, Z. Liang, Z. Yang, X. Li, J. Huang, and X. Guo, "Histologic subtype classification of non-small cell lung cancer using PET/CT images," *Eur. J. Nucl. Med. Mol. Imag.*, vol. 48, no. 2, pp. 350–360, Feb. 2021.

International Journal of Innovative Research in Science, Engineering and Technology

An ISO 3297: 2007 Certified Organization

Volume 13, Special Issue 1, April 2024

11th National Conference on Frontiers in Communication & Signal Processing Systems (NCFCSPS '24)

25th - 26th April 2024

Organized by

Department of ECE, Adhiyamaan College of Engineering, Hosur, Tamilnadu, India

[12]S. Lian, Y. Huang, H. Yang, and H. Zhao, "Serum carbohydrate antigen 12-5 level enhances the prognostic value in primary adenosquamous carcinoma of the lung: A two-institutional experience," *Interact. Cardio Vascular Thoracic Surg.*, vol. 22, no. 4, pp. 419–424, Apr. 2017.

[13]H. Maeda, A. Matsumura, T. Kawabata, T. Suito, O. Kawashima, T. Watanabe, K. Okabayashi, and I. Kubota, "Adenosquamous carcinoma of the lung: Surgical results as compared with squamous cell and adenocarcinoma cases," *Eur. J. Cardio-Thoracic Surg.*, vol. 41, no. 2, pp. 357–361, Feb. 2018.



INTERNATIONAL
STANDARD
SERIAL
NUMBER
INDIA



INTERNATIONAL JOURNAL OF INNOVATIVE RESEARCH

IN SCIENCE | ENGINEERING | TECHNOLOGY

 9940 572 462  6381 907 438  ijirset@gmail.com



www.ijirset.com

Scan to save the contact details